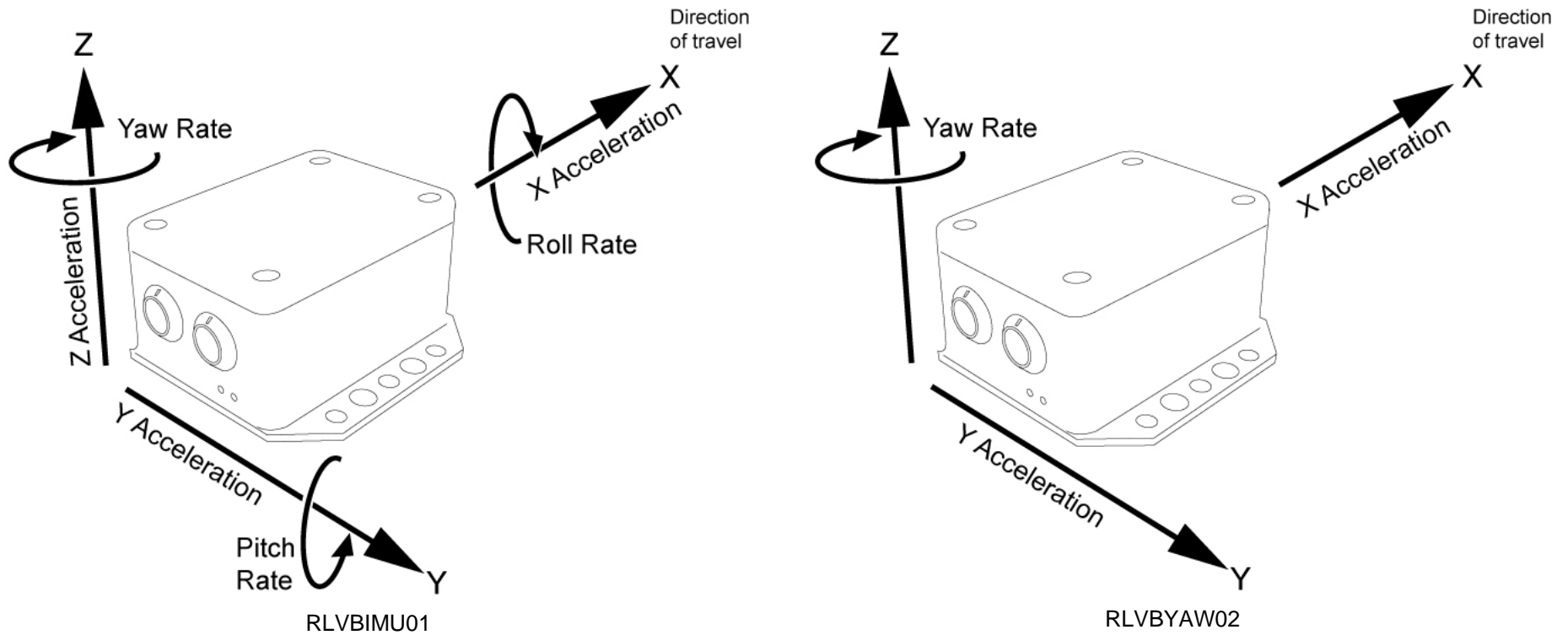


# IMU02 & YAW03 Inertial Sensors

## User Guide





---

<b>INTRODUCTION</b> .....	<b>3</b>
<b>FEATURES</b> .....	<b>3</b>
<b>STANDARD INVENTORY</b> .....	<b>3</b>
<b>OPERATION</b> .....	<b>4</b>
<b>USING THE IMU02/YAW03 WITH A RACELOGIC VBOX</b> .....	<b>6</b>
<b>USING THE IMU02/YAW03 WITH A DATALOGGER OTHER THAN VBOX</b> .....	<b>7</b>
CONFIGURING AN IMU02/YAW03 WITH RACELOGIC MODULE SETUP SOFTWARE .....	7
<b>CAN OPERATING MODES</b> .....	<b>8</b>
<i>Racelogic Polled CAN Mode – Default Mode</i> .....	8
<i>User Polled CAN Mode</i> .....	8
<i>Timed CAN Mode</i> .....	8
DATA FORMAT IN USER POLLED AND TIMED CAN MODE .....	9
<b>SETUP PARAMETERS</b> .....	<b>9</b>
<i>Timer</i> .....	9
<i>Baud Rate</i> .....	10
<i>Extended Identifiers</i> .....	10
<i>Request and Response Identifiers</i> .....	10
<i>Data Format</i> .....	11
<b>SETUP PARAMETERS TABLE</b> .....	<b>11</b>
<b>FIRMWARE UPGRADES</b> .....	<b>13</b>
<b>SPECIFICATION</b> .....	<b>14</b>
<i>Acceleration</i> .....	14
<i>Temperature Sensor</i> .....	14
<b>CONNECTION DATA</b> .....	<b>15</b>
<b>CAN BUS DATA FORMAT</b> .....	<b>16</b>
<b>CONTACT INFORMATION</b> .....	<b>17</b>



## Introduction

The YAW03 from Racelogic is a yaw rate (Z axis) sensor module combined with X and Y axis acceleration sensors.

The IMU02 from Racelogic is a full Inertial Measurement Unit that can measure Z, Y and X axis rotational rate (yaw, pitch and roll) as well as X, Y and Z axis acceleration.

The IMU02 and YAW03 are constructed with a splash-proof casing which is rated to a limited ingress IP rating of IP66, making it ideal for use on boats or in harsh environments.

## Features

- Robust MEMs technology
- Internal temperature compensation
- Twin socket CAN Bus interface
- RS-232 serial interface for firmware upgrade and setup
- 24bit internal resolution
- Can be used with VBOX or with any other CAN based logging system
- IP66 rating

## Standard Inventory

Description	Qty	Racelogic Part #
Inertial sensor module	1	RLVBYAW02 / RLVBIMU01
CAN Bus connecting cable (to Racelogic VBOX)	1	RLVBCAB5-CS
Firmware upgrade / unit set-up cable	1	RLVBCAB30-S

---

## Operation

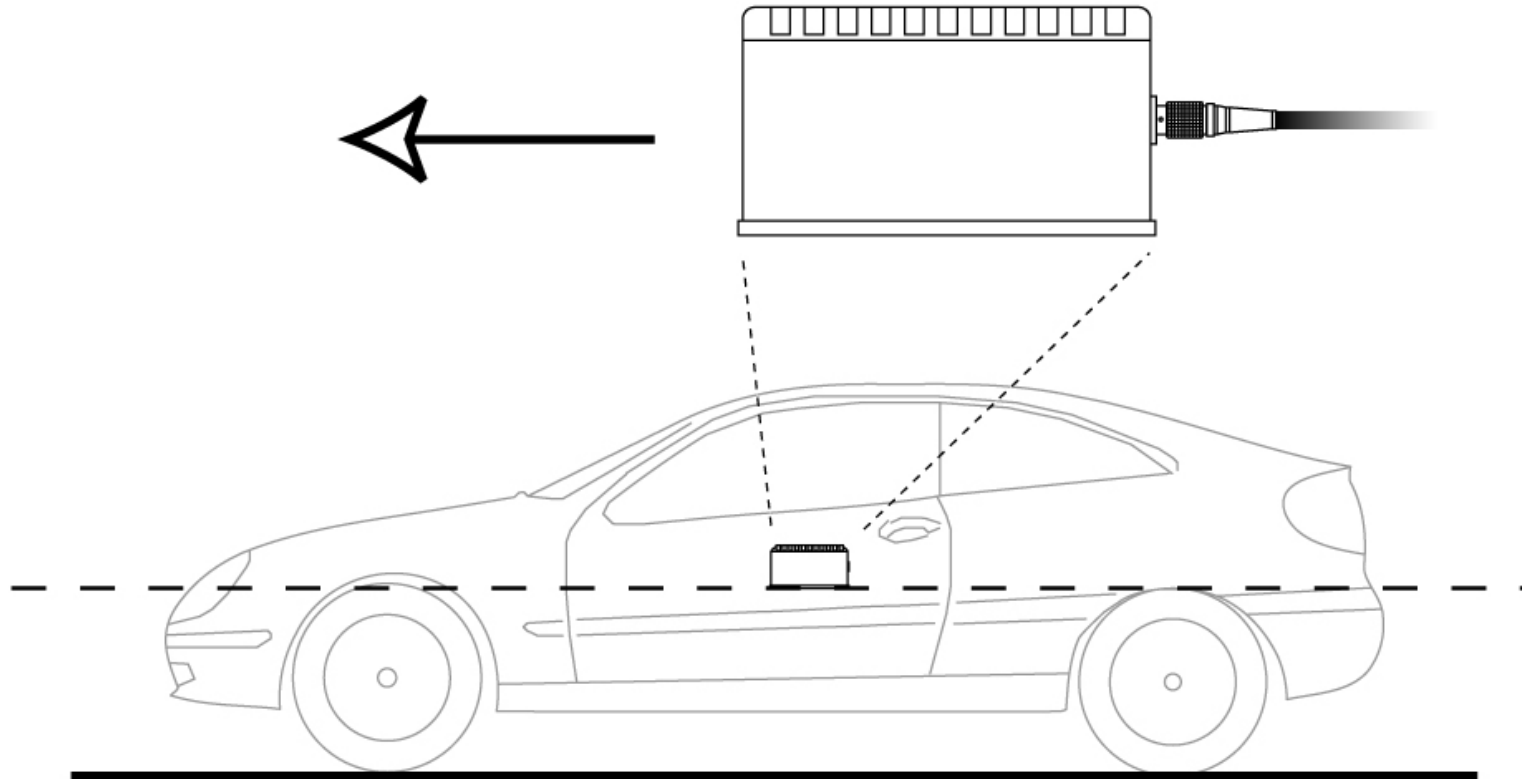
The IMU02/YAW01 power supply range is 6V to 30V. When using with a VBOX logging system, power is obtained through the CAB05-CS CAN Bus connection cable. The maximum operating voltage input must not exceed 30V DC.

### Lights

A red power light (PWR) indicates that the IMU02/YAW03 is connected to a live power source.

A blue serial communication light (SC) flashes when the IMU02 or YAW03 is communicating via either serial or CAN.

## Mounting



The IMU02/YAW03 should be mounted as close as possible to the centre of the vehicle. It is also important to mount the sensor so that it is level with the ground.

## Using the IMU02/YAW03 with a Racelogic VBOX

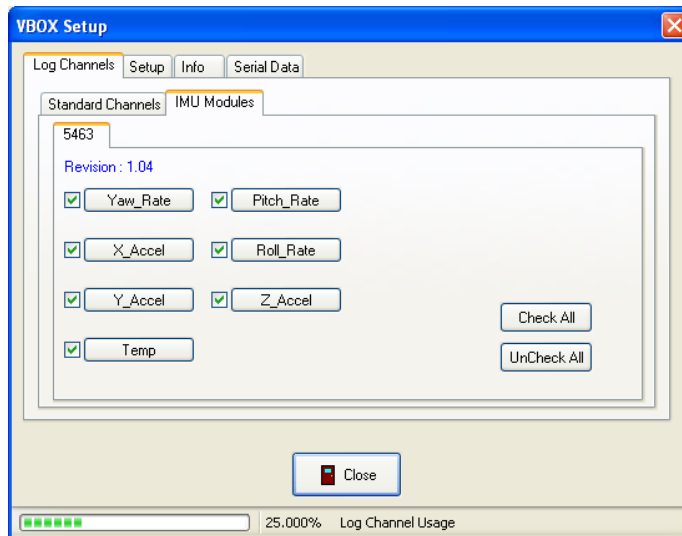
### Required equipment

- IMU02/YAW03 (supplied)
- CAB05-CS connecting cable (supplied)
- VBOX II DCF or VBOX III with associated cables

1. Mount the VBOX and IMU02/YAW03 in the vehicle. The IMU02/YAW03 should be mounted rigidly to the vehicle mid-way along the wheelbase.

2. Connect the IMU02/YAW03 to the 'CAN' connector of the VBOX using the CAB05-CS cable

3. Power up the VBOX. Using the setup screen in the VBOX software, tick the log boxes corresponding to the IMU02/YAW03 sensor (see screenshots below).



Tick channels to be logged (IMU02 shown).



To view live data in the VBOX software, make sure that channels are ticked in the Serial Data options (IMU02 shown).

4. The IMU02/YAW03 channel data will now be recorded along with the existing GPS data.

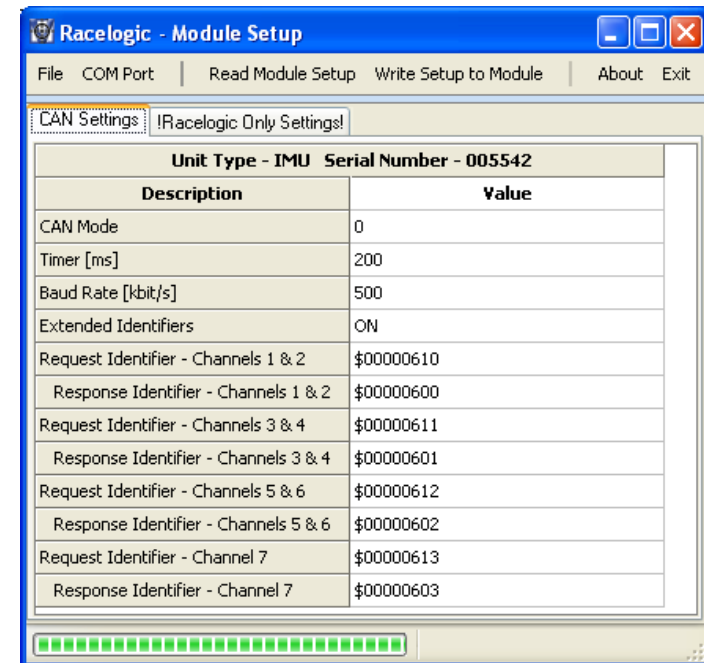
## Using the IMU02/YAW03 with a Datalogger other than VBOX

The IMU02/YAW03 can be easily configured to run in different CAN Bus operating modes using the supplied RLVBCAB30-S cable and Racelogic “Module Setup” software.

### Configuring an IMU02/YAW03 with Racelogic Module Setup Software

1. Connect the IMU02/YAW03 to a PC using the supplied RLVBCAB30 cable.
2. Power up the IMU02/YAW03 using a suitable 12v power source. Please observe correct polarity (Red=12v, Black = Ground).
3. Run the Module Setup software.
4. Click “Read Module Setup” – you should see a screen similar to that shown below. The screenshot shows the settings for an IMU02. If you get a “No response” message then check the IMU02/YAW03 is correctly connected, the power supply is on and that the correct COM Port is selected in the Module Setup software.
5. Make the changes required and then click the “Write Setup to Module” button.

**Note: When any change is made using the Module Setup Software the POWER MUST BE CYCLED for the change to take effect!**



27/09/2006

## CAN Operating Modes

The IMU02/YAW03 can operate in one of three different modes:

- Racelogic Polled CAN Mode
- User Polled CAN Mode
- Timed CAN Mode

### Racelogic Polled CAN Mode – Default Mode

This mode should be set if the IMU02/YAW03 is to be used with a Racelogic VBOX. All the CAN parameters are set to work with the Racelogic VBOX CAN protocol. In this mode no other parameters need be set or indeed will have any effect.

### User Polled CAN Mode

This mode allows a customer's own datalogging system to poll the IMU02/YAW03 for data using the CAN bus. In this way, the output timing of the sensor can be synchronised with other CAN information. The following parameters are all used and so must be set:

- Baud rate (Selectable from 125kbit/s, 250kbit/s, 500kbit/s or 1Mbit/s)
- Extended Identifiers (OFF or ON)
- Request identifiers (Identifiers used to request data from the sensor)
- Response identifiers (Identifiers used to transmit data from the sensor)

The timer parameter has no effect in this mode.

### Timed CAN Mode

In this mode the IMU02/YAW03 will send CAN data at intervals determined by the Timer value. The following parameters are all used and so must be set:

- Timer (Time interval in milliseconds between output data)
- Baud rate (Selectable from 125kbit/s, 250kbit/s, 500kbit/s or 1Mbit/s)
- Extended Identifiers (OFF or ON)
- Response identifiers (Identifiers used to transmit data from the sensor)

The Request Identifiers have no effect in this mode.

## Data Format in User Polled and Timed CAN Mode

YAW03 has 4 channels:

- Channel 1      Yaw\_Rate (deg/sec)
- Channel 2      X\_Accel (g)
- Channel 3      Y\_Accel (g)
- Channel 4      Temp (deg C)

IMU02 has 7 channels:

- Channel 1      Yaw\_Rate (deg/sec)
- Channel 2      X\_Accel (g)
- Channel 3      Y\_Accel (g)
- Channel 4      Temp (deg C)
- Channel 5      Pitch\_Rate (deg/sec)
- Channel 6      Roll\_Rate (deg/sec)
- Channel 7      Z\_Accel (g)

Channels are sent as pairs, so channels 1 and 2 will be sent together, 3 and 4 together and so on. The pairing of channels cannot be changed. The channel data is sent as 32bit Motorola format floats and thus each channel occupies 4 bytes. The first 4 data bytes contained within a data packet are the lower channel, the second 4 bytes are for the higher data channel. A CAN Bus DBC file containing default settings for each sensor is available on request from Racelogic.

## Setup Parameters

### Timer

The timer value is in milliseconds (ms). A smaller value means data will be sent more frequently, a larger value means data will be sent less frequently. The range of values that can be entered is 0 to 65535 however the minimum value that should be entered is 10. Below this value data values may be repeated on successive cycles. If a value of 0 is entered the IMU02/YAW03 will change it to 1 on the next power cycle.

Frequency output can be calculated as follows:

$$\text{Freq} = (1/\text{Timer}) * 1000$$

The Timer value for a required frequency can be calculated as follows:

$$\text{Timer} = (1/\text{Freq}) * 1000$$

Some example Timer values are shown against the frequency output.

Timer Value [ms]	Frequency [Hz]
10	100
50	20
100	10
400	2.5
1000	1

### Baud Rate

Baud Rate sets the bit rate of the CAN messages (not the frequency at which the messages are sent). The range of values that can be entered is 0 to 65535 however only the values indicated in the Setup Parameters Table should be used. A value other than these will cause the IMU02/YAW03 to change the Baud Rate value to 500kbit/s on the next power cycle.

### Extended Identifiers

Extended Identifiers can be set either ON or OFF. If they are off the CAN identifier type will be standard (11 bit). If they are on the CAN identifier type will be extended (29 bit). The Standard Identifier type allows 2048 different CAN message identifiers or message “names”. The Extended Identifier type allows 436207616 different CAN message identifiers. The identifier type should be set to match the CAN data logging equipment that the IMU02/YAW03 is connected to.

Entering a value of “off”, “OFF” or “0” will turn Extended Identifiers off. Any non-zero value, “on” or “ON” will turn Extended Identifiers on.

### Request and Response Identifiers

The Request Identifiers only have an effect in User Polled CAN Mode. They set the identifier values that the IMU02/YAW03 will filter for. If a CAN message is received that matches a Request Identifier then the IMU02/YAW03 will respond by sending the corresponding channel data on the corresponding Response Identifier. *Note: All channels can have the same Request Identifier – this means that on receipt of a single CAN message the IMU02/YAW03 will respond with all channels of data. The Response Identifiers MUST all be different.*

In Timed Mode the channel data will be sent at intervals with the corresponding Response Identifier – the Request Identifiers have no effect.

When using Standard Identifiers the maximum value for the identifiers is \$7FF. Entering a value higher than this may result in unexpected results, for instance a Response Identifier of \$00FFAA23 will result in a message being sent with Identifier \$223. To avoid anything unexpected the request and response identifiers should be set appropriately for use with Standard Identifiers by observing the range of values in the Setup Parameters Table.



### Data Format

This option allows you to change the format in which data is transmitted in stand-alone mode.

The available Format options are:

- IEEE 32-bit float
- 16-bit signed integer
- 16-bit unsigned integer
- 32 bit signed integer
- 32 bit unsigned integer
- Racelogic float

### Setup Parameters Table

Parameter	Options	Value to Enable	Comments
CAN Mode	Racelogic Polled mode	0	VBOX compatible mode. In this mode no other parameter has any effect.
	User Polled mode	1	Baud Rate must be set. Extended Identifiers must be set. Request Identifiers must be set. Response Identifiers must be set.
	Timed mode	2	Timer must be set. Baud Rate must be set. Extended Identifiers must be set. Response Identifiers must be set.
Timer [ms]	(message interval in ms)	10-65535	Minimum value is 10 (100Hz) – below this value data may be erroneous. If the Timer value is set to 0ms and Timed CAN Mode is on then Timer value will be changed to 1ms.
Baud Rate [kbit/s]	1000 kbit/s	1000	If a Baud Rate value other than those specified is entered it will be changed to a default value of 500kbit/s.
	500 kbit/s	500	“
	250 kbit/s	250	“
	125 kbit/s	125	“
Extended Identifiers	Standard (11 bit)	OFF	Request and Response Identifier range is 0 – 0x7FF (0 – 2047).
	Extended (29 bit)	ON	Request and Response Identifier range is 0 – 0x19FFFFFF (0 – 436207615).

27/09/2006



Parameter	Options	Value to Enable	Comments
Request Identifier – (Channels 1 & 2)	(user defined identifier)	Dependant on “Extended Identifiers” parameter	Yaw_Rate & X_Accel
Response Identifier – (Channels 1 & 2)	(user defined identifier)	“	“
Request Identifier – (Channels 3 & 4)	(user defined identifier)	“	Y_Accel & Temp
Response Identifier – (Channels 3 & 4)	(user defined identifier)	“	“
Request Identifier – (Channels 5 & 6)	(user defined identifier)	“	Pitch_Rate & Roll_Rate (Only applicable to IMU02, not available for YAW03).
Response Identifier – (Channels 5 & 6)	(user defined identifier)	“	“
Request Identifier – (Channel 7)	(user defined identifier)	“	Z_Accel (Only applicable to IMU02, not available for YAW03).
Response Identifier – (Channel 7)	(user defined identifier)	“	“
Data Format	IEEE 32-bit float	0	
	32-bit unsigned integer	1	
	16-bit signed integer	2	
	16-bit unsigned integer	3	
	Racelogic float	4	
	32-bit signed integer	5	

---

## Firmware Upgrades

Firmware refers to the operating software inside the IMU02/YAW03. The firmware is responsible for all of the functions within the IMU02/YAW03 and from time to time, firmware updates may be released by Racelogic to improve or enhance the way that the IMU02/YAW03 works. The latest firmware will always be available on the Racelogic web site in the downloads directory:-

<http://www.racelogic.co.uk/2003/vbox/downloads.htm>

It is recommended to check the web site periodically for updates. The IMU02/YAW03 upgrade files have a ".RUF" file extension. To upgrade the firmware, download the latest firmware file from the Racelogic web site. The RLVBCAB30-S cable can then be used to connect the IMU02/YAW03 to the PC serial connector. Using a suitable 12V power source, power up the IMU02/YAW03 and double-click on the downloaded upgrade file. Follow the on screen instructions to complete the upgrade.

If you have any questions regarding the firmware upgrade of any Racelogic product, please do not hesitate to contact [support@racelogic.co.uk](mailto:support@racelogic.co.uk)



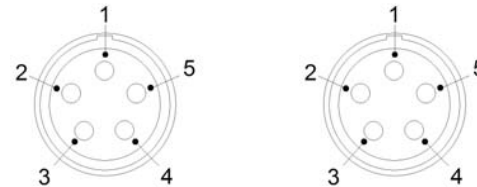
## Specification

	RLVBIMU01	RLVBYAW02
Number of output channels	7	4
Channel names	Yaw_Rate, Pitch_Rate, Roll_Rate, X_Accel, Y_Accel, Z_Accel, Temp	Yaw_Rate, X_Accel, Y_Accel, Temp

Parameter	Conditions	Max	Min	Typ	Unit
<b>Rate sensors</b>	$T_A=25^{\circ}\text{C}$				
Dynamic Range	Full-Scale over Specifications Range		$\pm 150$		/s
Nonlinearity	Best Fit Straight Line % of full scale			0.1	%
Resolution				0.01	/s
Bandwidth		40			Hz
<b>Acceleration</b>					
Range			$\pm 1.7$		G
Nonlinearity	% of full scale	$\pm 2.5$		$\pm 0.5$	%
Resolution			1		Mg
Accuracy	0g-input	$\pm 0.02$			G
Accuracy	1g-input	$\pm 0.01$			G
Bandwidth		50			Hz
Max Ratings	Powered (0.5ms)	2000g			
<b>Temperature Sensor</b>					
Temperature range <sup>1</sup>		+50.0	-10.0		$^{\circ}\text{C}$
Temperature resolution				0.1	$^{\circ}\text{C}$
Current	$\sim 70\text{mA}$				
Voltage	6 – 30V DC				
Operating temperature	-30 to +70 $^{\circ}\text{C}$				

<sup>1</sup> Temperature Range over which the device has been calibrated

## Connection Data



5 pin LEMO sockets

Looking from the outside of the box into the socket.

Both sockets are wired identically

PIN	In/Out	Description	Range
1	O	RS232 Tx (Configuration and Upgrade only)	$\pm 12v$
2	I	RS232 Rx (Configuration and Upgrade only)	$\pm 12v$
3	I/O	CAN Bus High	
4	I/O	CAN Bus Low	
5	I	+V Power	Same as Power +
Chassis	I	Ground	



## CAN Bus data format

Each data channel is a 32 bit Float

ID**	Update rate*	Data Bytes															
		0		1		2		3		4		5		6		7	
		7 6 5 4 3 2 1 0	7 6 5 4 3 2 1 0	7 6 5 4 3 2 1 0	7 6 5 4 3 2 1 0	7 6 5 4 3 2 1 0	7 6 5 4 3 2 1 0	7 6 5 4 3 2 1 0	7 6 5 4 3 2 1 0	7 6 5 4 3 2 1 0	7 6 5 4 3 2 1 0	7 6 5 4 3 2 1 0	7 6 5 4 3 2 1 0	7 6 5 4 3 2 1 0	7 6 5 4 3 2 1 0	7 6 5 4 3 2 1 0	
		MSB	LSB	MSB	LSB	MSB	LSB	MSB	LSB	MSB	LSB	MSB	LSB	MSB	LSB	MSB	LSB
<b>0x600</b>	10ms	Yaw Rate								X Acceleration							
<b>0x601</b>	10ms	Y Acceleration								Temperature							
<b>0x602</b>	10ms	Pitch Rate								Roll Rate							
<b>0x603</b>	10ms	Z Acceleration															

\* In timed mode the update rate can be changed using the configuration software

\*\* Default Identifiers. The identifiers can be changed using the configuration software

The YAW /IMU CAN database is available in Vector Database (DBC File) format on the Racelogic website



## Contact Information

Racelogic Ltd  
 5 Little Balmer  
 Buckingham Ind Pk  
 Buckingham  
 MK18 1TF  
 England

Tel: +44 (0) 1280 823803

Fax: +44 (0) 1280 823595

Email: [support@racelogic.co.uk](mailto:support@racelogic.co.uk)

Web: [www.racelogic.co.uk](http://www.racelogic.co.uk)

Revision	Date	Description	Author
1	22/9/2006	First Draft	KB